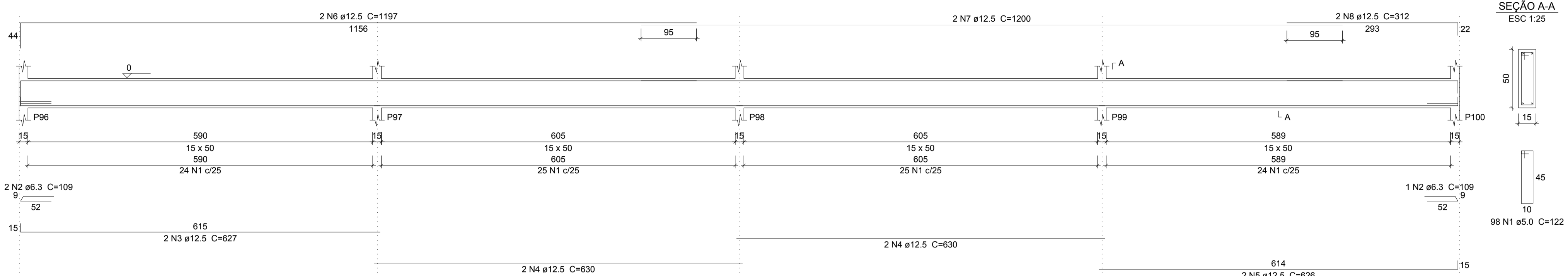


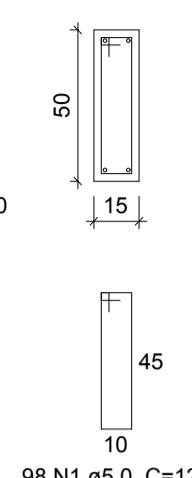
VB25

ESC 1:50



SEÇÃO A-A

ESC 1:25



Relação do aço

ELEMENTO	AÇO	N	DIAM	Q	UNIT (cm)	C.TOTAL (cm)
VB25	CA60	1	5.0	98	122	11956
	CA50	2	6.3	3	109	327
	CA50	3	12.5	2	627	1254
	CA50	4	12.5	4	630	2520
	CA50	5	12.5	2	626	1252
	CA50	6	12.5	2	1197	2394
	CA50	7	12.5	2	1200	2400
	CA50	8	12.5	2	312	624
	CA60	1	5.0	2	325	650
	CA60	2	5.0	73	122	8906
VB26	CA50	3	6.3	2	109	218
	CA50	4	10.0	2	155	310
	CA50	5	12.5	2	625	1250
	CA50	6	12.5	2	607	1214
	CA50	7	12.5	2	642	1284
	CA50	8	12.5	1	235	235
	CA50	9	12.5	2	1197	2394
	CA50	10	12.5	2	332	664
	CA60	1	5.0	34	122	4148
	CA50	2	10.0	2	343	686
VB27	CA50	3	10.0	1	205	205
	CA50	4	10.0	1	130	130
	CA50	5	10.0	2	930	1860
	CA50	6	12.5	2	575	1150
	CA60	1	5.0	48	122	5856
	CA50	2	10.0	2	585	1170
	CA50	3	10.0	2	1163	2326
	CA50	4	10.0	2	188	376
	CA50	5	12.5	2	681	1362
	CA60	1	5.0	20	82	1640
VB28	CA50	2	8.0	2	345	690
	CA50	3	10.0	2	374	748
	CA60	1	5.0	22	82	1804
VB29	CA50	2	8.0	2	381	762
	CA50	3	10.0	2	345	690
	CA60	1	5.0	22	82	1804
VB30	CA50	2	8.0	2	345	690
	CA50	3	8.0	2	401	802
	CA60	1	5.0	22	82	1804
VB31	CA50	2	8.0	2	381	762
	CA50	3	10.0	2	381	762
	CA60	1	5.0	22	82	1804
VB32	CA50	3	10.0	2	345	690
	CA50	2	8.0	2	381	762
	CA60	1	5.0	22	82	1804

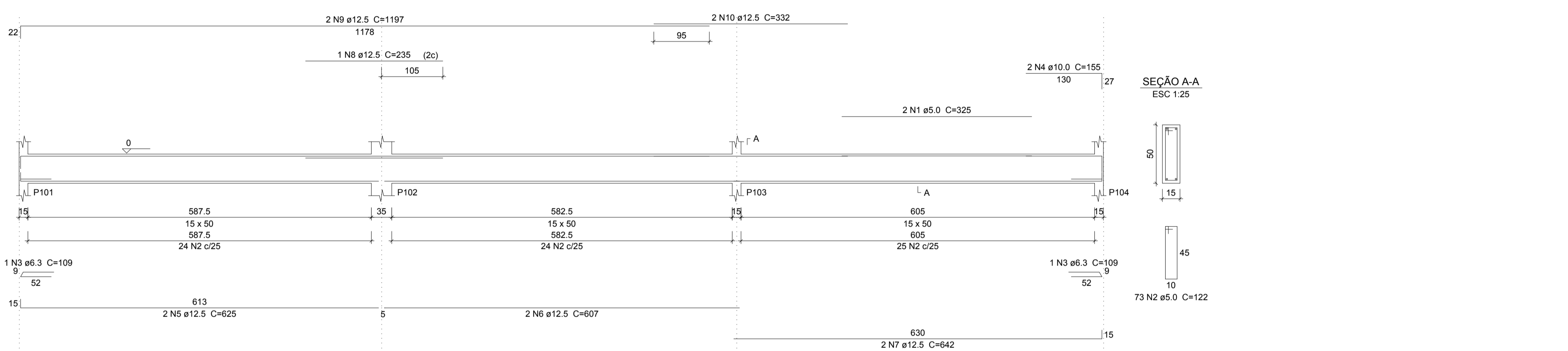
Resumo do aço

AÇO	DIAM	C.TOTAL (m)	PESO (kg)
CA50	6.3	5.5	1.3
	8.0	37.1	14.6
	10.0	92	56.7
	12.5	200	192.6
CA60	5.0	385.7	59.4
PESO TOTAL			
CA50		265.3	
CA60		59.4	

Vol. de concreto total (C-25) = 5.53 m³
Área de forma total = 85.61 m²

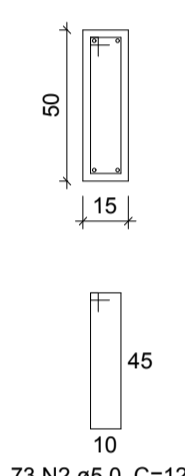
VB26

ESC 1:50



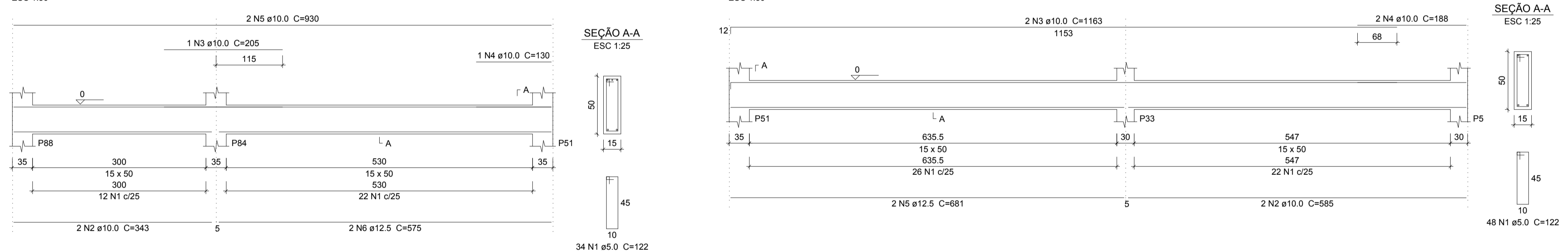
SEÇÃO A-A

ESC 1:25



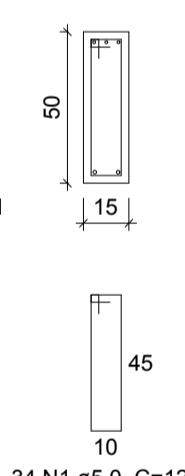
VB27

ESC 1:50



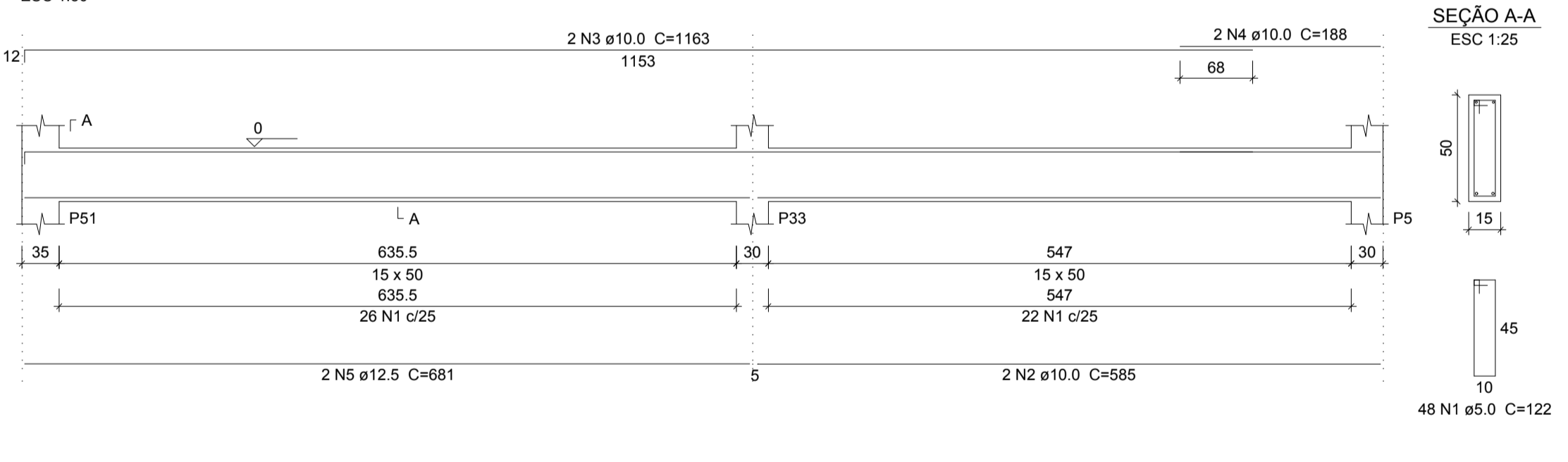
SEÇÃO A-A

ESC 1:25



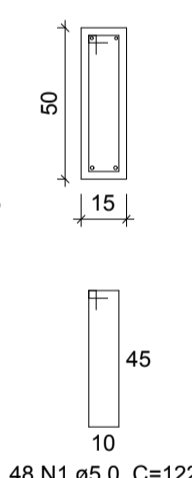
VB28

ESC 1:50



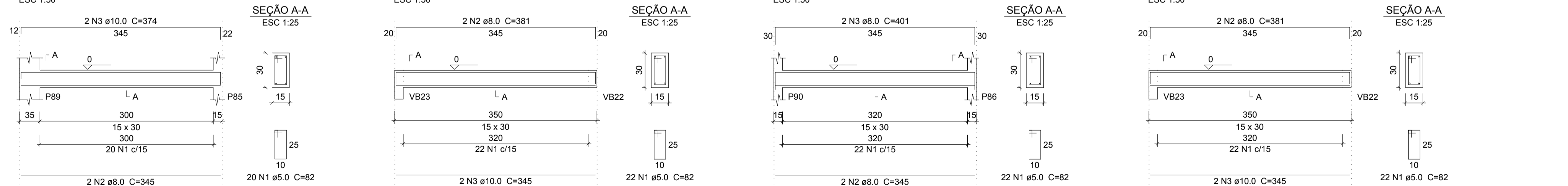
SEÇÃO A-A

ESC 1:25



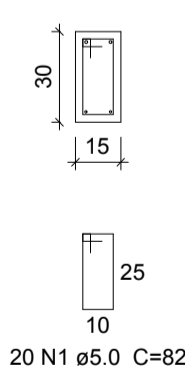
VB29

ESC 1:50



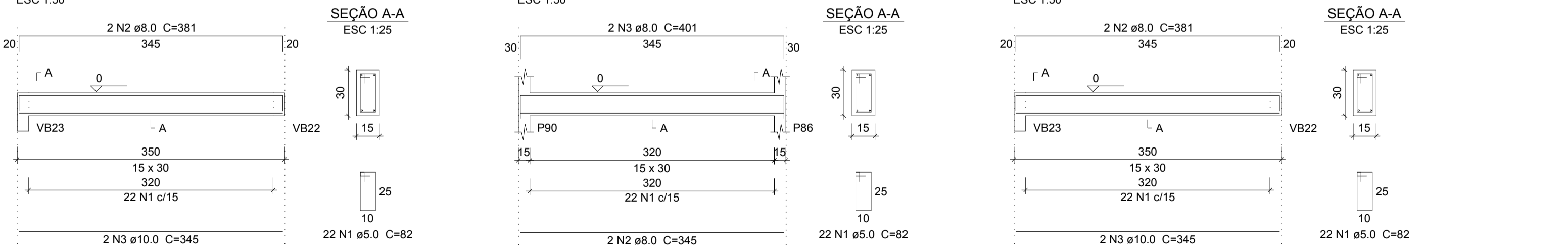
SEÇÃO A-A

ESC 1:25



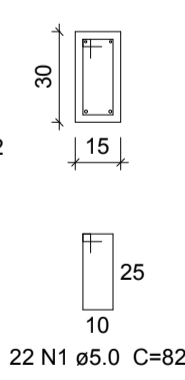
VB30

ESC 1:50



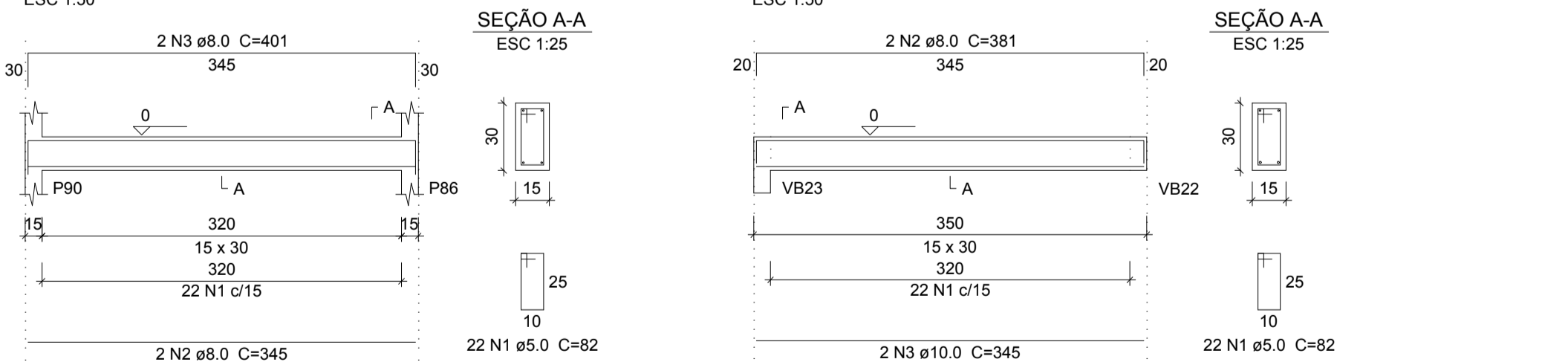
SEÇÃO A-A

ESC 1:25



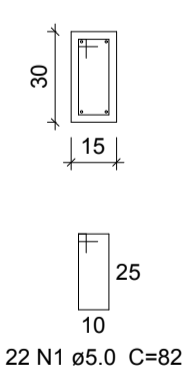
VB31

ESC 1:50



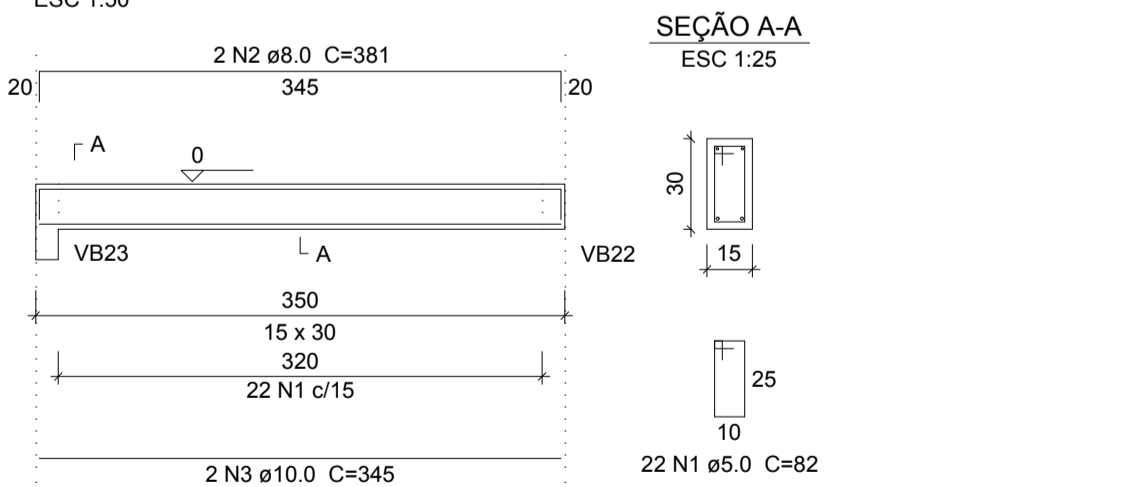
SEÇÃO A-A

ESC 1:25



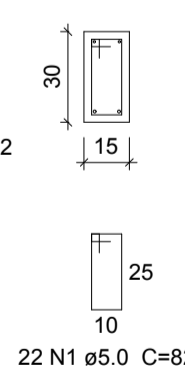
VB32

ESC 1:50



SEÇÃO A-A

ESC 1:25



DETALHE ESTRIBO LIGAÇÃO VIGA E PILAR

S/ESCALA

TIPO DA OBRA:	REESTRUTURAÇÃO DA ESCOLA ESTADUAL JOSE ALVES BEZERRA
PROPRIETÁRIO CPF OU CGC:	PREFETURA MUNICIPAL DE PORTO DOS GAÚCHOS
LOCAL E INSCRIÇÃO CADASTRAL:	Endereço: Av. Guilherme Meyer Município de Porto dos Gaúchos - MATO GROSSO
AUTOR DO PROJETO: CREA:	Evelin Luani Montagna MT 039125
RESPONSÁVEL TÉCNICO: CREA:	Evelin Luani Montagna MT 039125
ESCALA: INDICADA	DATA: OUT/2019
DESENHO:	ASSUNTO: PROJETO ESTRUTURAL; PLANTA DE ARMAÇÃO DAS VIGAS VB25, VB26, VB27, VB28, VB29, VB30, VB31, VB32
FOLHA Nº 30/45	
E S T A T I S T I C A	
ÁREAS:	% DE OCUPAÇÃO
VER PROJETO ARQUITETÔNICO	TÉRREO DEMAIS PAV.
	COEF. APROVEIT. Nº DE PISOS
	01